



# VANTAGE™

STRENGTH. VERSATILITY. QUALITY.



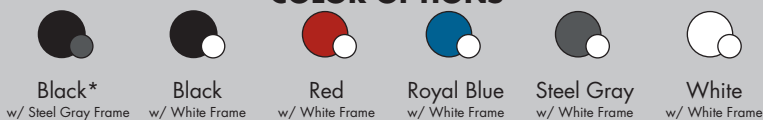
AVAILABLE IN  
• 10' x 10'  
• 10' x 20'

Stay shaded with our versatile Vantage™ shelter. With a cross-truss reinforced inside for extra support and strength, along with upgraded components throughout, this shelter is suitable for work or play. The shelter comes with an upgraded Wide-Trax™ Roller Bag to effortlessly transport to any street fair, trade show, or outdoor event. Also ideal for the beach, this shelter is the go-to for family gatherings, picnics, and more. Now available in 10' x 10' and 10' x 20' to suit your event needs.

## RECOMMENDED USES

- Craft Shows
- Parties
- Beach Days
- Picnics
- Sports Events
- Rentals
- Car Shows
- Fairs and Festivals

## COLOR OPTIONS

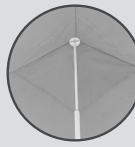


## OPTIONAL ACCESSORIES

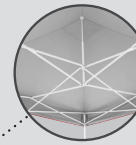
- Heavy-Duty Stake Kit
- Sidewalls and Half Walls
- E-Z UP Link Light System™
- Deluxe Weight Bags
- Railskirts
- Event Lights

\*Only Available for 10' x 10'

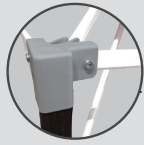
## TECHNOLOGY



**UV-Coated Interior**  
Provides Extra Protection  
from the Sun



**Cross-Truss Design**  
Superior Strength and Support



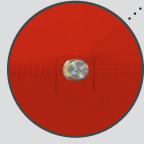
**High-Strength  
End Caps**  
Heavy-Duty End Caps  
for Greater Durability



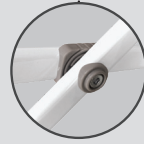
**Reinforced Fabric  
Top Corners**  
Fortifies and Protects  
for Maximum Longevity



**Auto-Slider® Pull Pin**  
Improved Auto-Slider® Pull Pin  
for Quick Lock and Release



**Bolt-On Top**  
For Added Fit  
and Form



**E-Z Glide Truss  
Washers**  
Increased Stability  
and E-Z Set Up



**Toggle Leg Adjustment**  
Adjustable Legs with  
5 Height Options



**HD Wheels**  
High-Density 2-Piece Wheels  
with Wider Axle for Smooth  
Transportation

## SPECIFICATIONS

	<b>10' x 10' (3 m x 3 m)</b>	<b>10' x 20' (3 m x 6 m)</b>
<b>SIZE (AT BASE)</b>	<b>10' x 10' (3 m x 3 m)</b>	<b>10' x 20' (3 m x 6 m)</b>
<b>FRAME</b>	Powder-Coated Steel	Powder-Coated Steel
<b>ITEM WEIGHT</b>	<b>50 lbs. (22.7 kg)</b>	89 lbs. (40.4 kg)
<b>SHIPPING WEIGHT</b>	60 lbs. (27.2 kg)	104 lbs (47.2 kg)
<b>BOX DIMENSIONS</b>	63.5" L x 10.75" W x 8.1" H (1.6 m x 27 cm x 21 cm)	9" H x 18" W x 65" L (23 cm x 45 cm x 1.7 m)
<b>WARRANTY</b>	7 Year	7 Year
<b>TOP FABRIC</b>	Commercial-Grade Fabric	Commercial-Grade Fabric
<b>SHADED AREA</b>	100 sq. ft. (9.3 sq. m)	200 sq. ft. (18 sq. m)
<b>MAXIMUM PEAK HEIGHT</b>	11' 5" (2.8 m)	11' 5" (3.5 m)
<b>MAXIMUM HEADROOM</b>	6' 10" (2 m)	7' 1" (2.2 m)
<b>MAXIMUM VALANCE CLEARANCE HEIGHT</b>	6' 10" (2 m)	6' 10" (2.1 m)
<b>TOP SPECIFICATIONS</b>	Meets CPAI-84, NFPA-70 and CAN/ULC-S109 Fire-Resistant Requirements	Meets CPAI-84, NFPA-70 and CAN/ULC-S109 Fire-Resistant Requirements



STRENGTH. VERSATILITY. QUALITY.

**International E-Z UP, Inc.**  
1900 Second Street  
Norco, California 92860  
(951) 279-0999 • FAX (800) 810-8775

TO ORDER:  
**(800) 45-SHADE**  
(800) 457-4233