



NEW

EXPRESS™ ALUMINUM

IMPRESSIVE DURABILITY.
LIGHTWEIGHT DESIGN. EXCEPTIONAL VALUE.

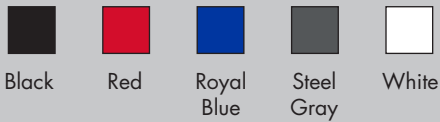




EXPRESS™ ALUMINUM SHELTER

The newest addition to the E-Z UP line, is a lightweight aluminum shelter ready to handle a heavy workload. The 10' x 10' Instant Shelter® Canopy is perfect for commercial or personal use with its robust hexagonal legs and highest quality E-Z UP® components.

STANDARD TOP COLORS



PREMIUM CUSTOM TOP COLORS



RECOMMENDED USES

- Farmers Market
- Curbside Pickup
- Team Sports
- Trade Shows
- Corporate Events
- Advertising
- Event Marketing
- Rental Industry
- Indoor & Outdoor Display
- Small Business

OPTIONAL ACCESSORIES

- Sidewalls & Railskirts
- Deluxe Weight Bags
- Express Roller Bag
- Heavy-Duty Stake Kit
- Flags & Banners
- Event Lights
- Link Lights
- Tables & Table Covers

EXPRESS™
ALUMINUM
IMPRESSIVE DURABILITY.
LIGHTWEIGHT DESIGN. EXCEPTIONAL VALUE.

E-Z AS...



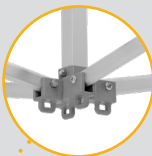
3



TECHNOLOGY



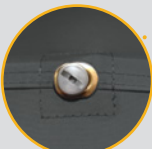
Reinforced Truss Muscle
Resists Increased Wind Loads



Center Hub
With Our Patented Fixed Attachment Points



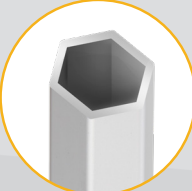
Auto-Slider® Pull Pin
Pull Pin Grooved for Quick Lock and Release



Bolt-On Top
Secures Top and Enhances Rain Runoff



Durable Commercial Top
Blocks 99% of UV Rays



Strong Hexagon Shaped Leg
Lightweight, Durable, Rust Resistant



Heavy-Duty Foot Pad
Wide-Traction Stability with Multiple Anchor Points



Toggle Leg Adjustment
Easy to Press, Finger-Friendly Toggle



100% Hi-Strength Aluminum Frame

SPECIFICATIONS

FRAME SHIPPING WEIGHT	41 lbs. (18.6 kg)	SHADED AREA	100 sq. ft. (9.3 sq m)
TOP SHIPPING WEIGHT	7 lbs. (3.2 kg)	MAXIMUM PEAK HEIGHT	11' 1" (3.38 m)
TOP BOX DIMENSIONS	24" L x 8" W x 3.5" H (60.9 cm x 20.3 cm x 8.9 cm)	MAXIMUM HEADROOM	6' 8" (2.03 m)
FRAME BOX DIMENSIONS	65" L x 9.5" W x 9.5" H (1.65 m x 24 cm x 24 cm)	MAXIMUM VALANCE CLEARANCE HEIGHT	6' 6" (1.98 m)
FOLDING DIMENSIONS	64" L x 8.5" W x 8.5" H (1.63 m x 21.6 cm x 21.6 cm)	TOP FABRIC	Commercial Grade Fabric
WARRANTY	5 Years	FIRE CERTIFICATION	Meets CPAI-84, NFPA-701 and CAN/ULC-S109 Fire-Resistant Requirements



IMPRESSIVE DURABILITY.
LIGHTWEIGHT DESIGN. EXCEPTIONAL VALUE.

International E-Z UP, Inc.
1900 Second Street
Norco, California 92860
(951) 279-0999 • FAX (800) 810-8775

TO ORDER:
(800) 45-SHADE
(800) 457-4233

ezup.com