

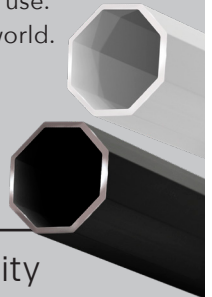


Available Sizes - 10'x10', 10'x15', 10'x20' & 13'x13'

Constructed from aircraft-grade 6061-T6 aluminum with oversized 50mm octagonal legs, the ENDEAVOR® canopy is built to last through the toughest conditions. Internal frame reinforcements combine with high-impact nylon fittings and premium Duralon® PRO fabric top to provide reliable performance without compromising ease of use. ENDEAVOR® is the strongest Instant Shelter in the world.

## BUILT TOUGH

The Ultimate in Strength and Durability



### FEATURES

**Industrial Grade Aluminum Frame**

Constructed from 6061-T6 aluminum with DualCore™ reinforced octagonal legs for superior strength in demanding environments.

#### FRAME COLORS



Clear Aluminum



Matte Black\*

**Cross-Brace Ceiling with FXT™ Anchor Points**

Patented frame design adds overhead support and built-in mounting locations for lights, banners, and essential gear.

**Duralon® PRO Fabric Top**

Features a water-repellent coating, UPF 50+ UV protection, and certified flame resistance for all-weather performance and peace of mind.

**E-Z Glide™ Leg Adjusters**

Engineered with debris-draining channels to glide smoothly in dirt or sand for effortless height adjustments.

**Impact & Temperature Resistant Joints**

Durable Nylon 6 fittings with anti-corrosion hardware maintain structural integrity through repeated use and harsh conditions.

**No-Pinch E-Z Lock & Release Corners**

Fast and safe setup and takedown system reduces hand strain and risk of pinching.

**Oversized Welded Foot Plate**

Heavy-duty aluminum foot plate ensures a stable platform and secure anchoring on a range of surfaces.

\*Matte Black Frame Not Available for 10'x15' & 13'x13'

#### STOCK TOP COLORS



Black



Red



Royal Blue



Steel Gray



White

#### PREMIUM TOP COLORS



Beige



Bone



Brown



Burgundy



Forest Green



Gold



Grape



Limeade



Kelly Green



Navy Blue



Silver



Splash



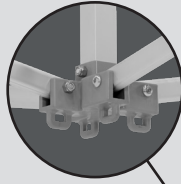
Steel Orange



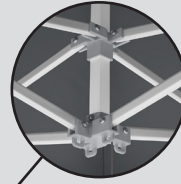
Yellow

# TECHNOLOGY

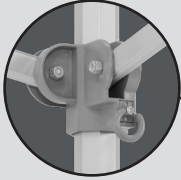
**INTEGRATED ACCESSORY HOOK**  
Ideal for Hanging Lights & More



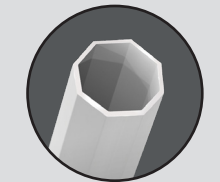
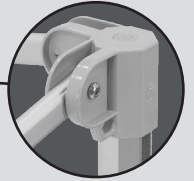
**CROSS-BRACE CEILING**  
Overhead Support Structure  
Reinforces Frame



**E-Z Lock & Release**  
Pinch Free for  
Fast Setup & Takedown

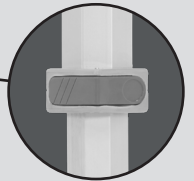


**Anti-Corrosion Hardware**  
Impact & Temp  
Resistant Nylon

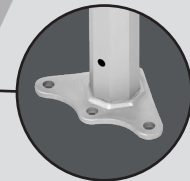


**6061-T6 Industrial  
Aluminum Frame**  
Octagonal 50mm  
Leg Shape

**E-Z Glide™ Leg Adjusters**  
Comfortable Toggle Grip  
with 5 Height Options



**Heavy-Duty Foot**  
Welded Aluminum Foot Plate for Stability



## SPECIFICATIONS

<b>TOP FABRIC</b>	Duralon® PRO - 500D Polyester
<b>FIRE CERTIFICATION</b>	Meets the CPAI-84, NFPA-701, & CAN/ULC-S109 Fire-Resistance Requirements and California Fire Certified Flame Retardant
<b>CUSTOM PRINTING OPTIONS</b>	Custom Graphics Available
<b>WARRANTY</b>	Lifetime Limited

# EnDeavor®



## 10' X 10' SPECIFICATIONS

<b>SHADED AREA</b>	100 sq ft (9 sq. m)
<b>FRAME SHIPPING WEIGHT</b>	68 lbs. (27.4 kg)
<b>TOP SHIPPING WEIGHT</b>	12 lbs. (5.4 kg)

<b>FRAME BOX DIMENSIONS</b>	67" L x 12.5" W x 11.5" H (1.7 m x 32 cm x 29 cm)
<b>TOP BOX DIMENSIONS</b>	26.5" L x 10.5" W x 3.5" H (67 cm x 27 cm x 9 cm)
<b>FOLDED DIMENSIONS</b>	63" L x 12" W x 12" H (1.6 m x 31 cm x 31 cm)
<b>MAXIMUM PEAK HEIGHT</b>	11' 2" (3.4 m)
<b>MAXIMUM HEADROOM</b>	7' 1" (2.2 m)
<b>MAXIMUM VALANCE CLEARANCE HEIGHT</b>	6' 9" (2.1 m)



## 10' X 15' SPECIFICATIONS

<b>SHADED AREA</b>	150 sq ft (13.9 sq. m)
<b>FRAME SHIPPING WEIGHT</b>	100 lbs. (45.3 kg)
<b>TOP SHIPPING WEIGHT</b>	15 lbs. (6.8 kg)

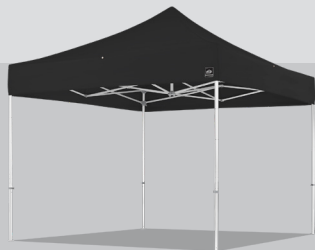
<b>FRAME BOX DIMENSIONS</b>	67" L x 17" W x 14" H (1.7 m x 43 cm x 36 cm)
<b>TOP BOX DIMENSIONS</b>	26.5" L x 14.5" W x 4.5" H (67 cm x 37 cm x 11 cm)
<b>FOLDED DIMENSIONS</b>	63" L x 16" W x 12" H (1.6 m x 41 cm x 31 cm)
<b>MAXIMUM PEAK HEIGHT</b>	11' (3.4 m)
<b>MAXIMUM HEADROOM</b>	6' 10" (2.1 m)
<b>MAXIMUM VALANCE CLEARANCE HEIGHT</b>	6' 7" (2 m)



## 10' X 20' SPECIFICATIONS

<b>SHADED AREA</b>	200 sq ft (18.6 sq. m)
<b>FRAME SHIPPING WEIGHT</b>	129 lbs. (60 kg)
<b>TOP SHIPPING WEIGHT</b>	22 lbs. (10 kg)

<b>FRAME BOX DIMENSIONS</b>	65" L x 26" W x 13.5" H (1.65 m x 66 cm x 34 cm)
<b>TOP BOX DIMENSIONS</b>	27" L x 15" W x 5" H (69 cm x 38 cm x 13 cm)
<b>FOLDED DIMENSIONS</b>	63" L x 24.5" W x 12" H (1.6 m x 62 cm x 31 cm)
<b>MAXIMUM PEAK HEIGHT</b>	11' 5" (3.5 m)
<b>MAXIMUM HEADROOM</b>	7' 3" (2.2 m)
<b>MAXIMUM VALANCE CLEARANCE HEIGHT</b>	6' 9" (2.1 m)



## 13' X 13' SPECIFICATIONS

<b>SHADED AREA</b>	169 sq ft (15.7 sq. m)
<b>FRAME SHIPPING WEIGHT</b>	90 lbs. (41 kg)
<b>TOP SHIPPING WEIGHT</b>	20 lbs. (9 kg)

<b>FRAME BOX DIMENSIONS</b>	84.5" L x 13" W x 13.25" H (2.1 m x 33 cm x 34 cm)
<b>TOP BOX DIMENSIONS</b>	26" L x 14.5" W x 4.25" H (66 cm x 37 cm x 11 cm)
<b>FOLDED DIMENSIONS</b>	81.5" L x 12" W x 12" H (2 m x 31 cm x 31 cm)
<b>MAXIMUM PEAK HEIGHT</b>	12' 9" (3.9 m)
<b>MAXIMUM HEADROOM</b>	7' 7" (2.3 m)
<b>MAXIMUM VALANCE CLEARANCE HEIGHT</b>	7' 5" (2.3 m)

# EnDeavor<sup>®</sup>

**International E-Z UP, Inc.**  
 1900 Second Street  
 Norco, California 92860  
 (951) 279-0999 • FAX (800) 810-8775

TO ORDER:  
**(800) 45-SHADE**  
 (800) 457-4233