



10' X 10'

13' X 13'



# Endeavor™

Own the strongest and most durable Instant Shelter® product in the world, the Endeavor™ shelter. This patented one-piece professional-grade shelter is a strong, octagonal-legged shelter built to perform and is ideal for command posts, recruiting, military, government, and more. The Endeavor™ shelter has a frame constructed of aircraft-grade aluminum and comes assembled with hardware components and technology designed to make it stronger and withstand the toughest environments.



### AVAILABLE IN

- 10' x 10'
- 10' x 15'
- 10' x 20'
- 13' x 13'

# TECHNOLOGY



**Auto-Peak® Tensioner**  
Ensures Proper Top Fit and Form

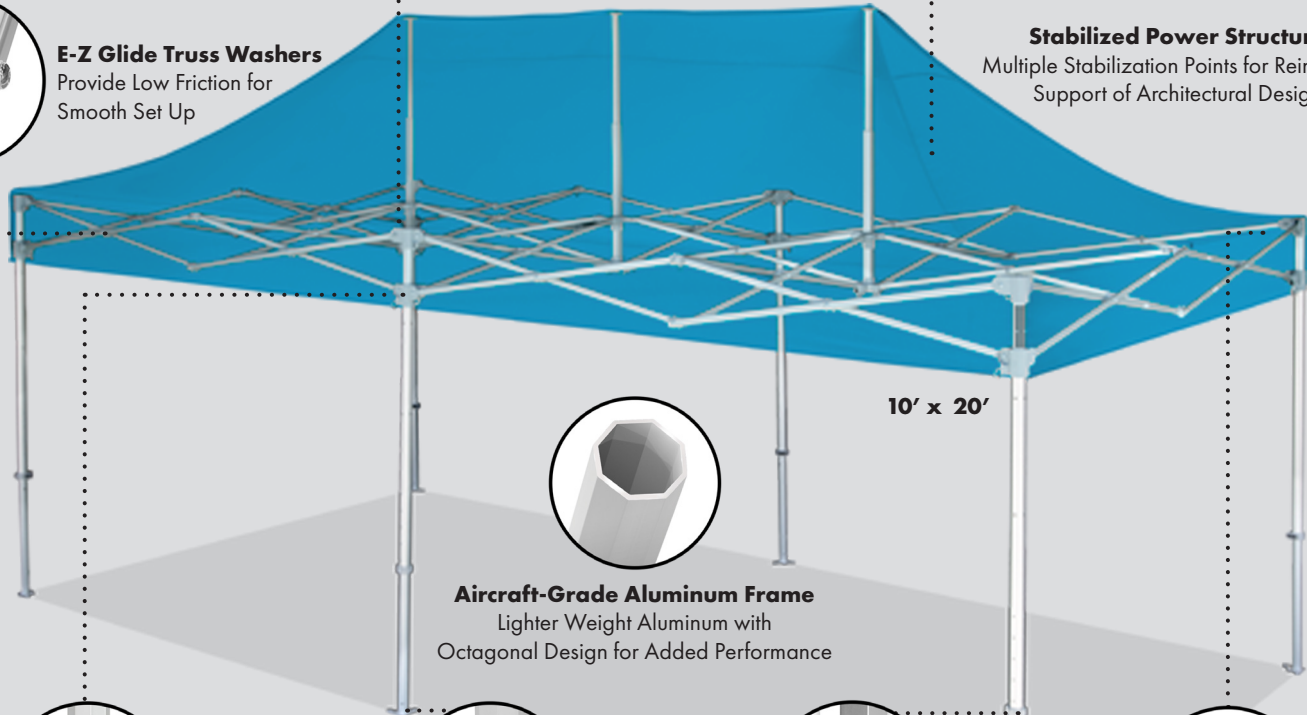


**Professional-Grade Fabric Top**  
Greater Durability and Longer Lasting Performance



**E-Z Glide Truss Washers**  
Provide Low Friction for Smooth Set Up

**Stabilized Power Structure**  
Multiple Stabilization Points for Reinforced Support of Architectural Design



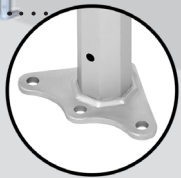
10' x 20'



**Aircraft-Grade Aluminum Frame**  
Lighter Weight Aluminum with Octagonal Design for Added Performance



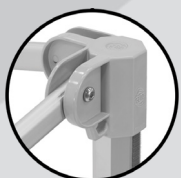
**Auto-Slider® Pull Pin**  
Pull Pin Grooved for Quick Lock and Release



**Heavy-Duty Foot Pad**  
Aircraft-Grade Aluminum and Extra Wide for Increased Stability



**Toggle Leg Adjusters**  
Comfortable Toggle Grip with 5 Height Adjustment Options (13' x 13' has 3 Height Adjustment Options)



**High-Strength Corners**  
Heavy-Duty for Greater Durability and Includes Built-In FXT Attachment Points

## All Endeavor™ Products Include the Following Features:

**FRAME**

Aircraft-Grade Aluminum Frame is Rust Resistant and 25% Lighter than Steel

**TOP FABRIC**

Professional Grade Fabric

**FIRE CERTIFICATION**

Meets the CPAI-8 and NFPA-701, CAN/ULC-S109 Fire-Resistance Requirements and California Fire Certified Flame Retardant

**PRODUCT INCLUDES**

Fabric Top, Folding Frame, and Cover Bag

**CUSTOM PRINTING OPTIONS**

Custom Graphics Available\*

**WARRANTY**

7 Years





## MIX AND MATCH

Customize your Endeavor™ shelter to suit your style with a custom color top or custom-printed graphics! Whichever direction you go, your Endeavor™ shelter is UP for Everything™.

### FRAME COLORS



Clear Aluminum



Matte Black\*\*\*

### STANDARD TOP COLORS



Black Red Royal Blue Steel Gray White

### PREMIUM CUSTOM TOP COLORS



Beige Bone Brown Burgundy Forest Green Gold Grape Limeade Kelly Green Navy Blue Silver Splash Steel Orange Yellow

### RECOMMENDED USES

- Sponsorship Advertising
- Trade Shows
- Corporate Events
- Event Marketing
- Rental Industry
- Indoor & Outdoor Display
- Automotive & Racing Events
- Disaster Relief Services
- Emergency Response

### OPTIONAL ACCESSORIES

- Event Lights
- Deluxe Weight Bags
- Heavy-Duty Stake Kit
- Sidewalls & Railskirts\*
- Deluxe Wide-Trax™ Roller Bag\*\*
- Tables & Table Covers
- Flags and Banners
- Chairs

\*Railskirts Available for 10' Side Only  
\*\*Not Available in 10' x 20' and 13'x13'  
\*\*\*Not Available 13'x13'

## SIZES

### ENDEAVOR™ 10' X 10' (3 m x 3 m)



#### MAXIMUM VALANCE CLEARANCE HEIGHT

<b>SHADED AREA</b>	100 sq ft (9 sq. m)
<b>FRAME SHIPPING WEIGHT</b>	68 lbs. (27.4 kg)
<b>TOP SHIPPING WEIGHT</b>	12 lbs. (5.4 kg)
<b>TOP BOX DIMENSIONS</b>	26.5" L x 10.5" W x 3.5" H (67.3 cm x 26.7 cm x 8.9 cm)
<b>FRAME BOX DIMENSIONS</b>	67" L x 12.5" W x 11.5" H (1.7 m x 32 cm x 29 cm)
<b>MAXIMUM PEAK HEIGHT</b>	11' 2" (3.4 m)
<b>MAXIMUM HEADROOM</b>	6' 11" (2.2 m)
<b>MAXIMUM VALANCE CLEARANCE HEIGHT</b>	6' 9" (2.1 m)





## SIZES

### ENDEAVOR™ 10' X 15' (3 m x 4.5 m)



<b>SHADED AREA</b>	150 sq ft (14 sq. m)
<b>FRAME SHIPPING WEIGHT</b>	100 lbs. (45.3 kg)
<b>TOP SHIPPING WEIGHT</b>	15 lbs. (6.8 kg)
<b>TOP BOX DIMENSIONS</b>	26.5" L x 14.5" W x 4.5" H (67.3 cm x 36.8 cm x 11.4 cm)
<b>FRAME BOX DIMENSIONS</b>	67" L x 17" W x 14" H (1.7 m x 43 cm x 35.6 cm)
<b>MAXIMUM PEAK HEIGHT</b>	11' 2" (3.4 m)
<b>MAXIMUM HEADROOM</b>	6' 11" (2.2 m)
<b>MAXIMUM VALANCE CLEARANCE HEIGHT</b>	6' 9" (2.1 m)

### ENDEAVOR™ 10' X 20' (3 m x 6 m)



<b>SHADED AREA</b>	200 sq ft (18.6 sq. m)
<b>FRAME SHIPPING WEIGHT</b>	129 lbs. (60 kg)
<b>TOP SHIPPING WEIGHT</b>	22 lbs. (10 kg)
<b>TOP BOX DIMENSIONS</b>	27" L x 15" W x 5" H (69 cm x 38 cm x 13 cm)
<b>FRAME BOX DIMENSIONS</b>	65" L x 26" W x 13.5" H (1.65 m x 66 cm x 34 cm)
<b>MAXIMUM PEAK HEIGHT</b>	11' 2" (3.4 m)
<b>MAXIMUM HEADROOM</b>	6' 11" (2.2 m)
<b>MAXIMUM VALANCE CLEARANCE HEIGHT</b>	6' 9" (2.1 m)

### ENDEAVOR™ 13' X 13' (4 m x 4 m) Only Available in Clear Aluminum Frame



<b>SHADED AREA</b>	169 sq ft (15.7 sq. m)
<b>FRAME SHIPPING WEIGHT</b>	90 lbs. (41 kg)
<b>TOP SHIPPING WEIGHT</b>	20 lbs. (9 kg)
<b>TOP BOX DIMENSIONS</b>	26" L x 14.5" W x 4.25" H (66 cm x 36.8 cm x 10.8 cm)
<b>FRAME BOX DIMENSIONS</b>	84.5" L x 13" W x 13.25" H (2.15 m x 33 cm x 33.7 cm)
<b>MAXIMUM PEAK HEIGHT</b>	13' 3" (4.1 m)
<b>MAXIMUM HEADROOM</b>	7' 11" (2.4 m)
<b>MAXIMUM VALANCE CLEARANCE HEIGHT</b>	7' (2.1 m)



**International E-Z UP, Inc.**  
 1900 Second Street  
 Norco, California 92860  
 (951) 279-0999 • FAX (800) 810-8775

TO ORDER:  
**(800) 45-SHADE**  
 (800) 457-4233