



Instructions For **EXPRESS™ RAILSKIRT HARDWARE**

What's in the Kit Box:

10' Railskirt Kit - (2) Railskirt Poles, (1) Left Bracket (Point), (1) Right Bracket (Flat), (1) Connector

This Railskirt Hardware is designed to fit Express™ shelters. Before proceeding make sure the shelter is fully opened and elevated to the desired height.

A. Open the fixed corner bracket by unscrewing the knob completely and remove from bracket.

B. Locate the rail mounting hole in the shelter leg approx. 37" from ground. (B1.) With the bracket open, wrap bracket around the leg and align one of the **railskirt poles** into the notch in the bracket. (B2.) Securely in place, insert the bolt with **knob** through the bracket and pole completely and screw to secure.

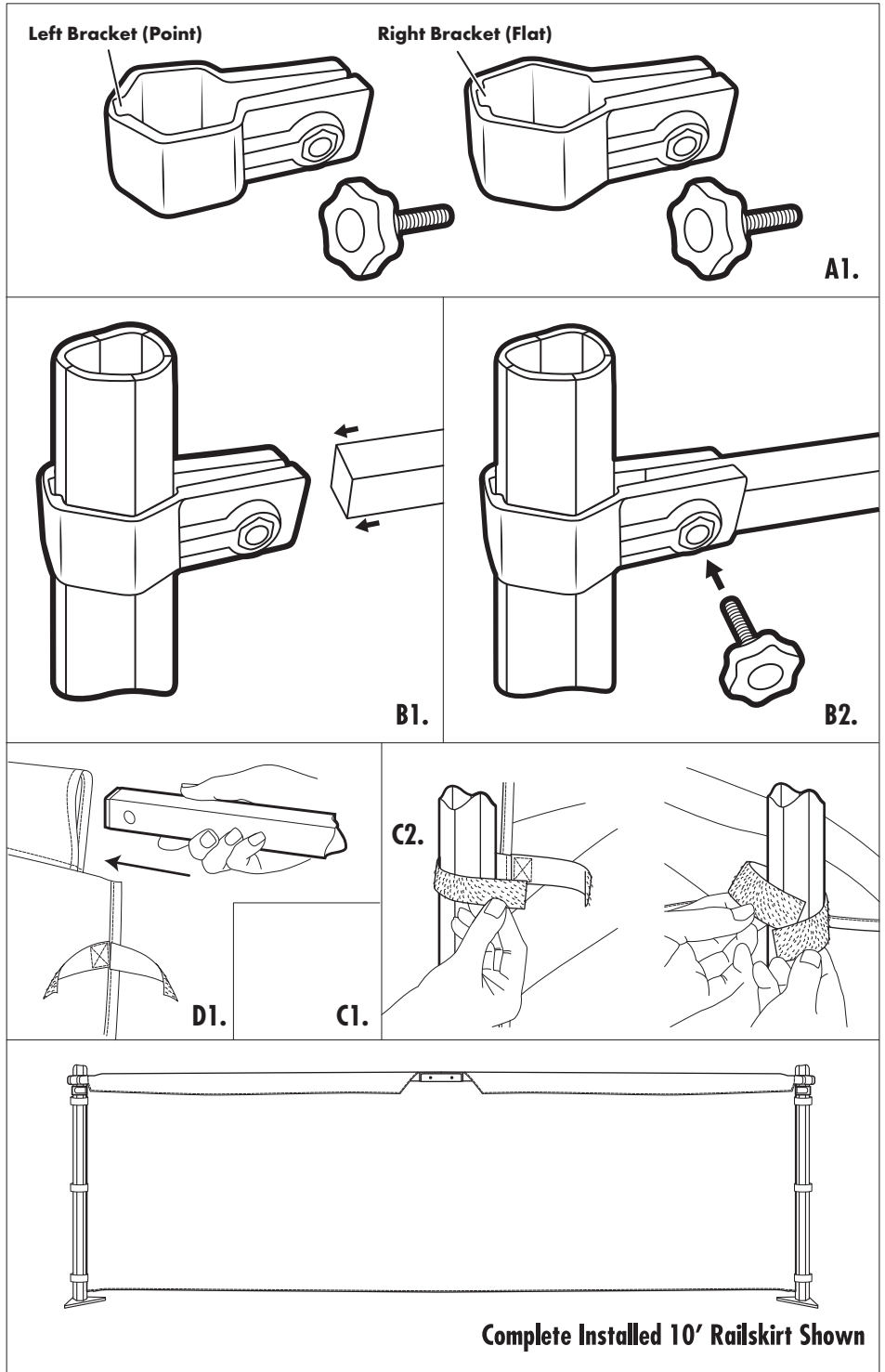
C. Attach the **connector pole** and (C1.) Attach the other **railskirt pole** to the opposite end of the **connector pole**. Verify that the snap buttons click into a locked position.

D. Slide the railskirt pole through the top fabric sleeve. Repeat Steps A with additional bracket in place on adjacent leg.

E. Attach the opposite side of the railskirt pole to the fixed corner bracket on the adjacent leg.

F. (C2.) Wrap the railskirt quick attachment straps around the shelter legs and fasten.

To remove the railskirt assembly from the shelter, repeat the above steps in reverse order.



© Copyright 2020 International E-Z UP, Inc. USA. All rights reserved.

INTERNATIONAL E-Z UP, INC.
1900 Second St. Norco, California 92860

800-45-SHADE

The #1 Instant Shelter® Brand in the World

ezup.com